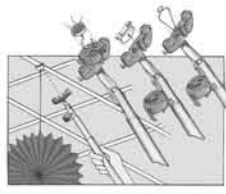


You Can Hang Around With Us!

10' Telescopic Hang-All Pole



- #HP-VT9**
- For use with HangCor, Mighty Mag, Twist-On Ceiling Hanger, Double "C" Hooks and Grid Clips
 - Ideal for hanging all decorations!



| ITEM # | DESCRIPTION | PK SIZE | PRICE |
|--------|---------------|---------|---------|
| HP-VT9 | HANG-ALL POLE | 1 | \$41.95 |

Mighty Mag Magnetic Ceiling Hanger

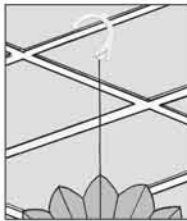


- #MM-25**
- 1 1/4" Diameter
 - Holds up to 4 1/2 lbs.
 - Perfect for frequent sign changes
 - Put in place with our HP-VT9 (Hang-All Pole)



| ITEM # | DESCRIPTION | PK SIZE | PRICE EACH | | |
|--------|-----------------------|---------|------------|-----------|--------|
| | | | 25-975 | 1000-4975 | 5000+ |
| MM-25 | MAGNETIC CEILING HOOK | 25 | \$1.06 | \$0.93 | \$0.82 |

Double Barbed Hook & Cord Ceiling Hanger



- #HOOKDB**
- Rigid Plastic
 - Designed to attach to drop ceilings, ceiling grids, poles or tubes
 - Cord is made with a barb on each end for ease in use



| ITEM # | DESCRIPTION | PK SIZE | PRICE EACH | | |
|--------|------------------------------|---------|------------|-----------|--------|
| | | | 50-950 | 1000-4950 | 5000+ |
| HOOKDB | 8' HOOK & CORD DOUBLE BARBED | 50 | \$0.15 | \$0.13 | \$0.12 |

HangCor Twist-On Ceiling Hanger

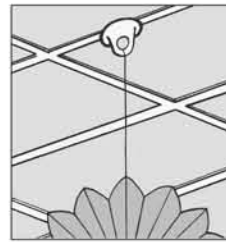


- #HANGCOR**
- White Polypropylene
 - 6 feet of string with barb
 - Put in place with our HP-VT9 (Hang-All Pole)



| ITEM # | DESCRIPTION | PK SIZE | PRICE EACH | | |
|---------|---------------------------------------|---------|------------|-----------|--------|
| | | | 50-950 | 1000-4950 | 5000+ |
| HANGCOR | TWIST-ON CEILING GRID CLIP W/ 6' CORD | 50 | \$0.26 | \$0.23 | \$0.21 |

Twist-On Ceiling Hanger

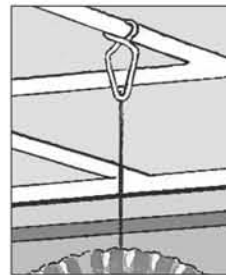


- #T7100W**
- Rigid Plastic
 - Twists onto standard ceiling grids
 - Can be left in place as a permanent fixture or easily removed for repositioning
 - Put in place with our HP-VT9 (Hang-All Pole)



| ITEM # | DESCRIPTION | PK SIZE | PRICE EACH | | |
|--------|----------------------------|---------|------------|-----------|--------|
| | | | 50-950 | 1000-4950 | 5000+ |
| T7100W | TWIST-ON CEILING GRID CLIP | 50 | \$0.25 | \$0.22 | \$0.20 |

Grid Clip Ceiling Hanger



- #GC-2**
- Galvanized Steel, 3" in length
 - Holds up to 10 lbs.
 - Squeezes onto standard ceiling grids
 - Put in place with our HP-VT9 (Hang-All Pole)



| ITEM # | DESCRIPTION | PK SIZE | PRICE EACH | | |
|--------|-------------|---------|------------|-----------|--------|
| | | | 100-900 | 1000-4900 | 5000+ |
| GC-2 | GRID CLIP | 100 | \$0.09 | \$0.08 | \$0.07 |

Want to make sure your customers get your message? We can customize our decorations to promote brand and product identification by producing our stock items with your company name and logo.

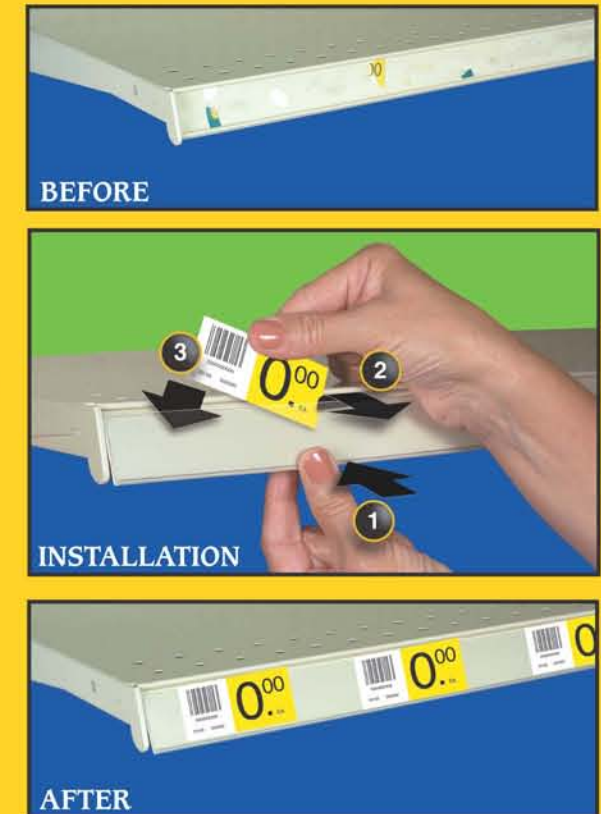


Visit Our New
Interactive Website
www.simplesignman.com

Display Your Paper Tickets Utilizing The EZ-2-SEE Merchandising System and Take Advantage Of These Benefits:

- EZ-2-SEE ticket holder strips are used in conjunction with paper tickets and price cards, which are less expensive than adhesive labels.
- Price changes are quick and easy with paper tickets versus adhesive labels. No scraping to remove the labels or cleaning shelves. Just simply press the bottom of the EZ-2-SEE ticket holder strip and drop in the ticket.
- EZ-2-SEE ticket holder strips will restore the look of old shelves or retain the clean look of new shelves.
- EZ-2-SEE sign holders and clips are inexpensive, easy to install and make promotional signage stand out.
- EZ-2-SEE color inserts attract attention to product groups, color code departments or display your corporate colors.

The EZ-2-SEE merchandising system will save time, money and improve the look of your store. Call today to receive your copy of our EZ-2-SEE Merchandising Catalog at 1-800-874-1732 or visit our new interactive website at www.simplesignman.com



- 1 Simply press the bottom edge.
- 2 The window pops open for removal of the old ticket.
- 3 Just insert the new ticket; the window closes tightly.

Make a Clear Difference in
Shelf Merchandising with

EZ 2 SEE